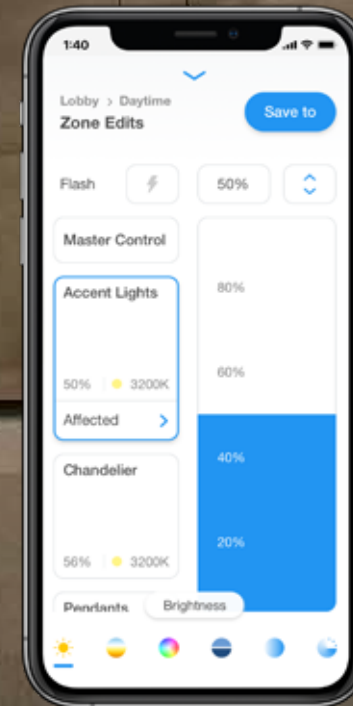


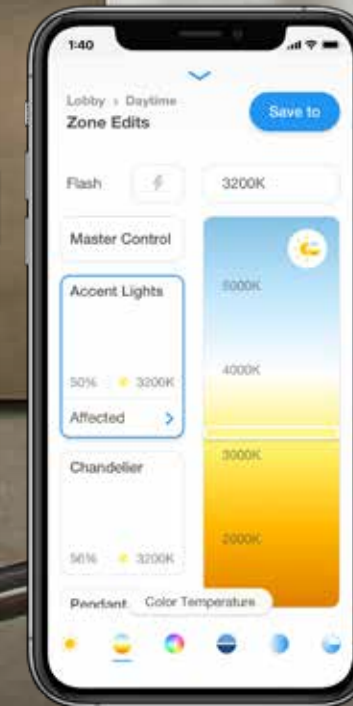
# INTRODUCING ATHENA

The dynamic lighting control system that brings the magic of light to everyday moments

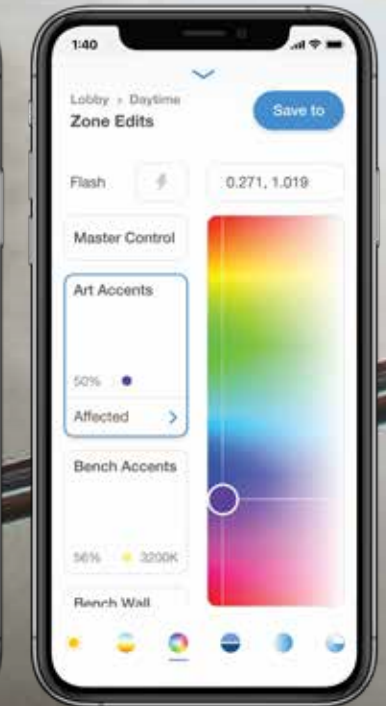
- **Flexible, simple, all-in-one solution** to control any light source with Ketra and intelligent shades
- Design without compromise - use **any fixture** you like and **all load types** in a single system
- **Connected apps** deliver a holistic light experience



Static White



Tunable White



Saturated Color

# ATHENA

From galleries and museums, to high-end restaurants and hotels, curate lighting scenes that bring your visions to life.

## Workplace

Support workplace **well-being** with comfortable, natural light. Stay **flexible** with agile solutions that evolve with changing business needs.



## Hotels

Create a **luxurious space** where guests want to spend time – and money. With the easy-to-use app, it's **simple for staff** to create memorable experiences on property and quickly adjust lighting for events.

## Retail

Show **merchandise in its best light** with precision TruBeam optics and vibrancy. Create **visual interest** or celebrate a special occasion with saturated color.

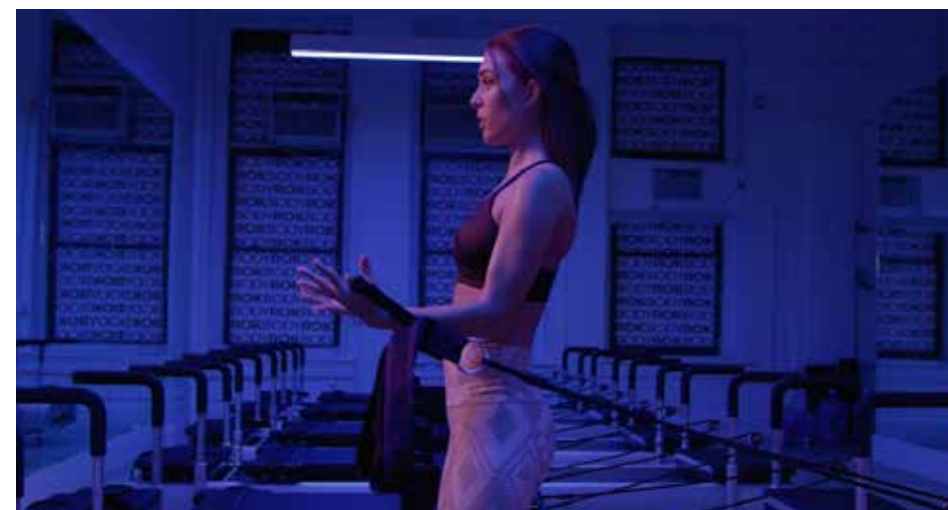


## Restaurant

**Nurture a mood** with deep dimming and saturated color. Enhance the **appearance of food** and décor, as menus and seasons change.

## Galleries and Museums

Show art in historically accurate light, or enhance color vibrancy. Easily **change zones and scenes** as exhibits rotate.



## Self Care

Support an **immersive sensory experience** with dynamic light. **Customize studios and treatment rooms** for a client, a service, or your brand.

# ATHENA

All-in-one solution with a range of options and aesthetics.

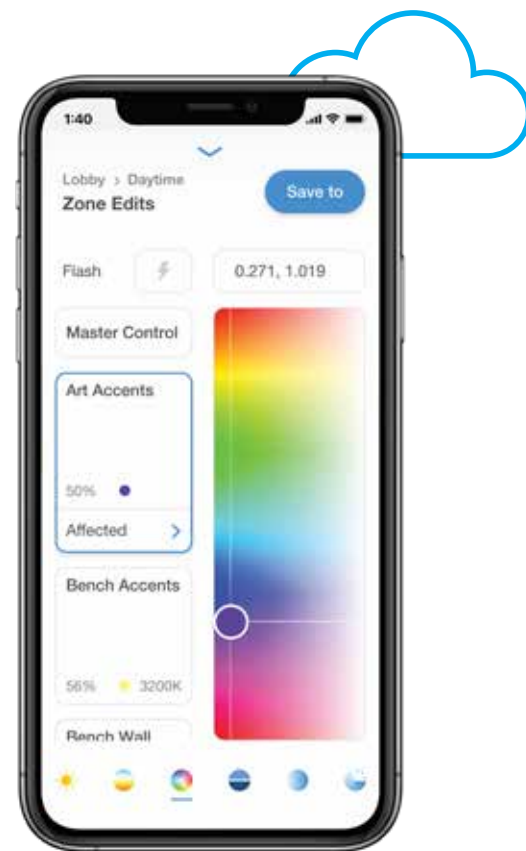
## SOFTWARE

### Lighting Designer App

- Easily design and refine – precision fine-tuning of CCT, saturated color, intensity, and more

### Space Manager App

- Quickly change lighting scenes, timeclock events, and shade positions



## LIGHTS. SHADES. CONTROLS.

### Range of Controls – Touchscreen, Keypads, Personal, and Touchless

- Touchscreen, Keypads and wireless remotes, flexible sensors, I/O and A/V interfaces



### Lights and Shades Work Together Seamlessly

- Preserve view, mitigate glare, ultra-quiet operation, hembar alignment, broad fabric selection



### Integrated Ketra for Beautiful Light

- Millions of colors, simplified natural light, and superior optics for light where you need it



Lamps

Linears

Downlights

## BACK OF HOUSE

### Right-Sized Hub

- Small and large spaces
- Built for the cloud
- Automatic software upgrades



### Any Source, Fixture, Load Type, and Protocol

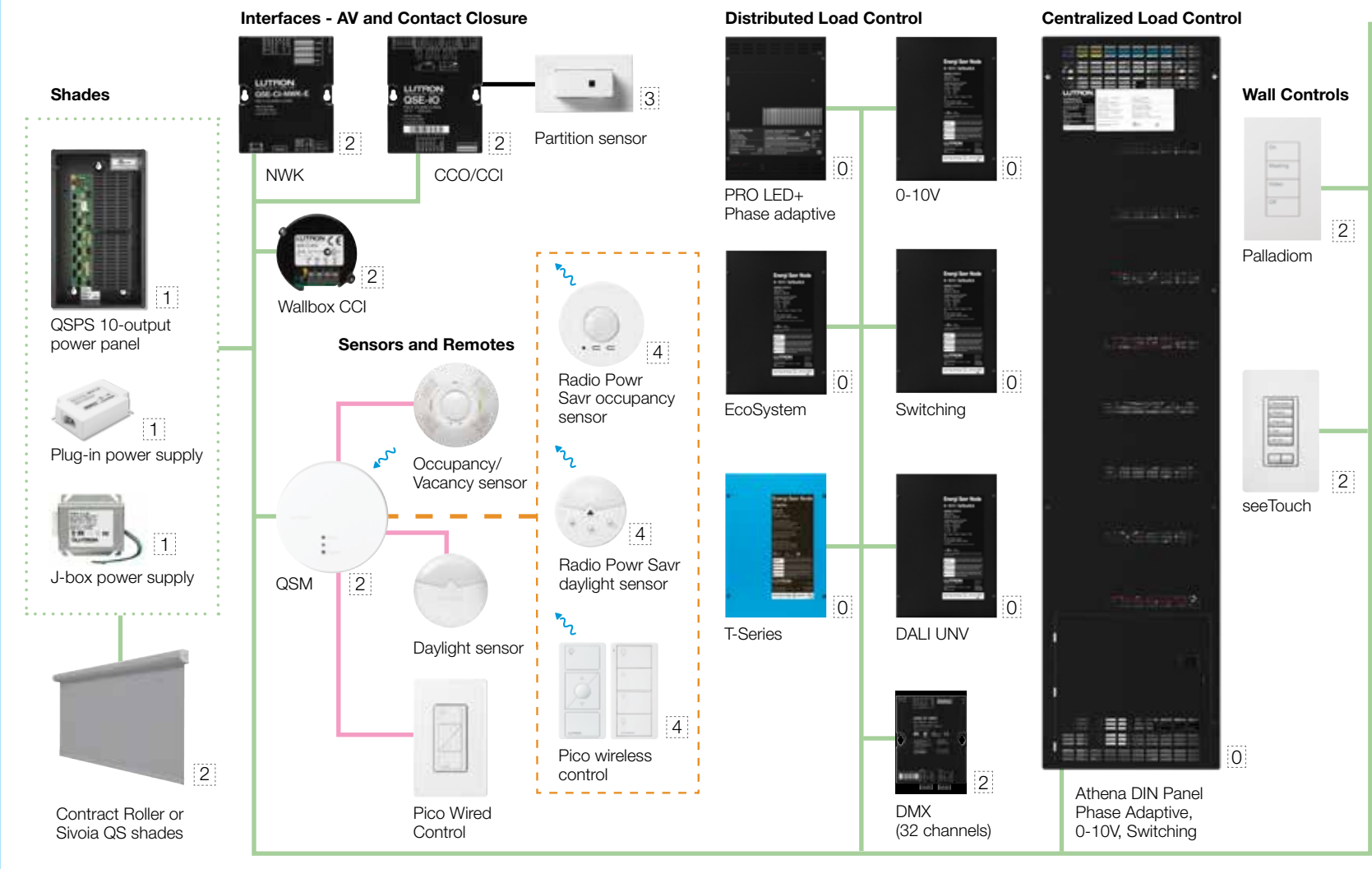
- ESN Pro LED+ Phase Adaptive, 0-10V, DALI
- T-Series tunable white
- EcoSystem 0.1% dimming



# ATHENA System Architecture

## QS Wired Link

- **QP5-2L and QP5-4L:** 99 QS devices per link  
512 switchlegs per link\*
- **QP6-1L and QP5-1L:** 25 QS devices per link  
256 switchlegs per link\*
- 2,000 feet maximum wire length (consult technical specs for other applicable rules)
- Free-wire topology (star, daisy chain, home run, etc.)
- Standard Lutron 4 conductor cable\*\*



## Mobile app

**Lutron App**

The Lutron App communicates with connected Athena processor hubs via the cloud

## Clear Connect Wireless - Type X

**Luminaries**

- D3 Downlight (0)
- D4R Downlight (1)
- G2 Linear (0)

**Lamps**

- S30 Lamp (1)
- S38 Lamp (1)
- A20 Lamp (1)
- L4R Linear (0)
- L3I Linear (0)
- LS0 Lightbar Slim (0)

• 100 Clear Connect Type X devices per gateway

• Refer to N3 and X96 spec sheets for system design rules

N3 Satellite (0), X96 (0)

### Athena System Capacities

- 16 total Athena Edge Processors and Clear Connect Type X Gateways (max, any combination)
- 16,384 switchlegs (max, excluding Ketra)\*
- 1500 Ketra devices (max)\*\*

\* A switchleg is the smallest controllable point on any product - a single CCO, a zone of 0-10V, or a single digital address for a fixture.

\*\* An N3 and an X96 counts as 1 device regardless of the amount of fixtures connected to it.

### Key - Wiring

- QS Wired Link\*
- QSM Wired Sensor Link
- - - Clear Connect Wireless-Type A Link
- Ketranet PLC
- X-96 Wired Link
- - - Clear Connect Wireless - Type X Link
- System Ethernet Link — Ethernet connection between processors and Clear Connect Type X Gateways to the internet required for system startup and app function.

\*\*Pin-out: pin 1 - common, pin 2 - VDC, pin 3 - MUX, pin 4 - MUX

GRX-CBL-346S-500 (runs up to 500ft): one pair 18AWG, one pair #18-22AWG twisted/screened

GRX-CBL-46L (runs up to 2000ft): one pair 12AWG, one pair #18-22AWG twisted/screened

RS-485, 24 - 35VDC powered

The wire gauge required for shade power conductors is dependent on shade size and number, wire run length, and power supply type being used. Consult technical specifications of shade equipment for details.

This document is a system architecture overview. Please refer to system and product spec sheets for complete details.

### Key - Power

- 0 120 or 277VAC
- 1 Line voltage 120VAC
- 2 Low voltage 24-35 VDC
- 3 Plug-in transformer
- 4 Battery powered
- 5 Power over Ethernet (PoE)

